

DROUGHT MONITORING WORK GROUP

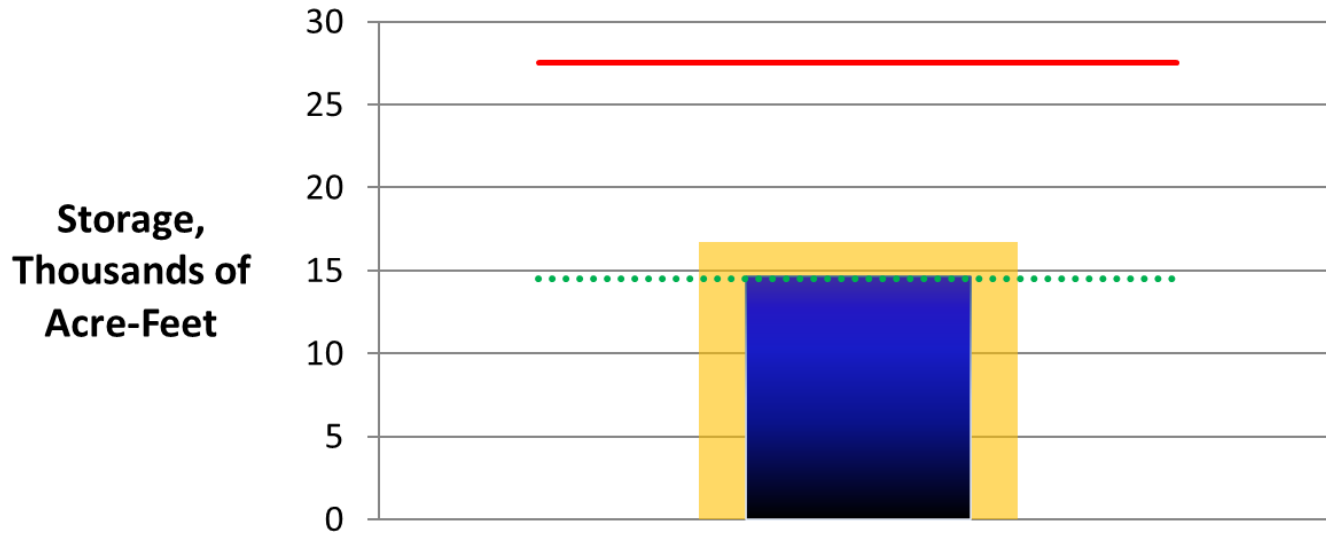
NMOSE Report

June 28, 2022

Introduction

- Bringing information together
 - Focus on reservoir storage – Graphic view
- Current storage, reservoir median, previous month and last year storage data
 - USACE preliminary data for current storage (June 27, 2022) for all reservoirs except
 - Ute utilized USGS data from June 27, 2022
 - USACE data for last month storage (May 23, 2022) for all reservoirs except
 - Ute utilized USGS data from May 23, 2022
 - NRCS data (June 27, 2022) for last year and median storage, except
 - Ute utilized USGS data for last year and for the period 1991 to 2020
 - Conchas utilized USACE data for last year
- Data will be utilized for public distribution and NMOSE DTF website

Legend For Reservoir Storage Volumes in New Mexico

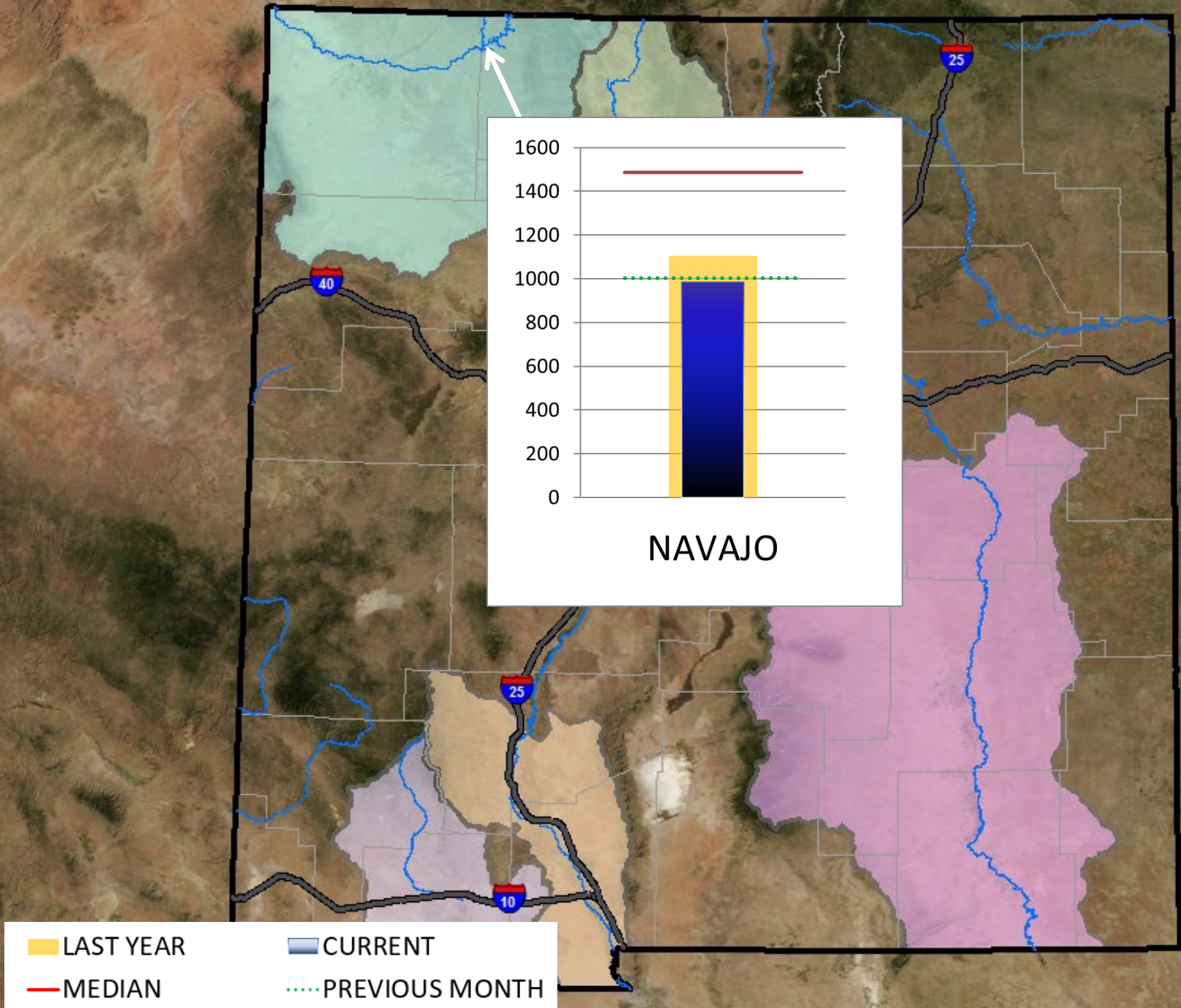


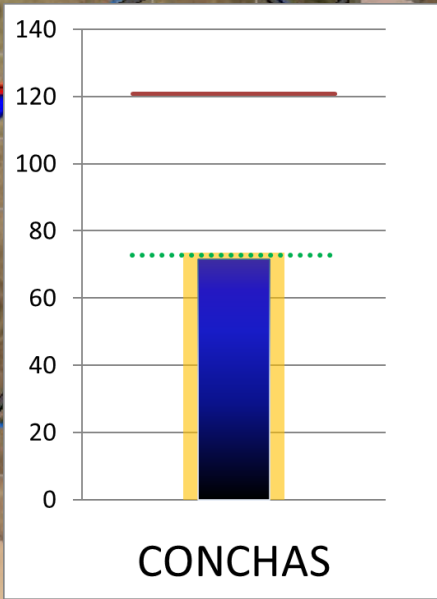
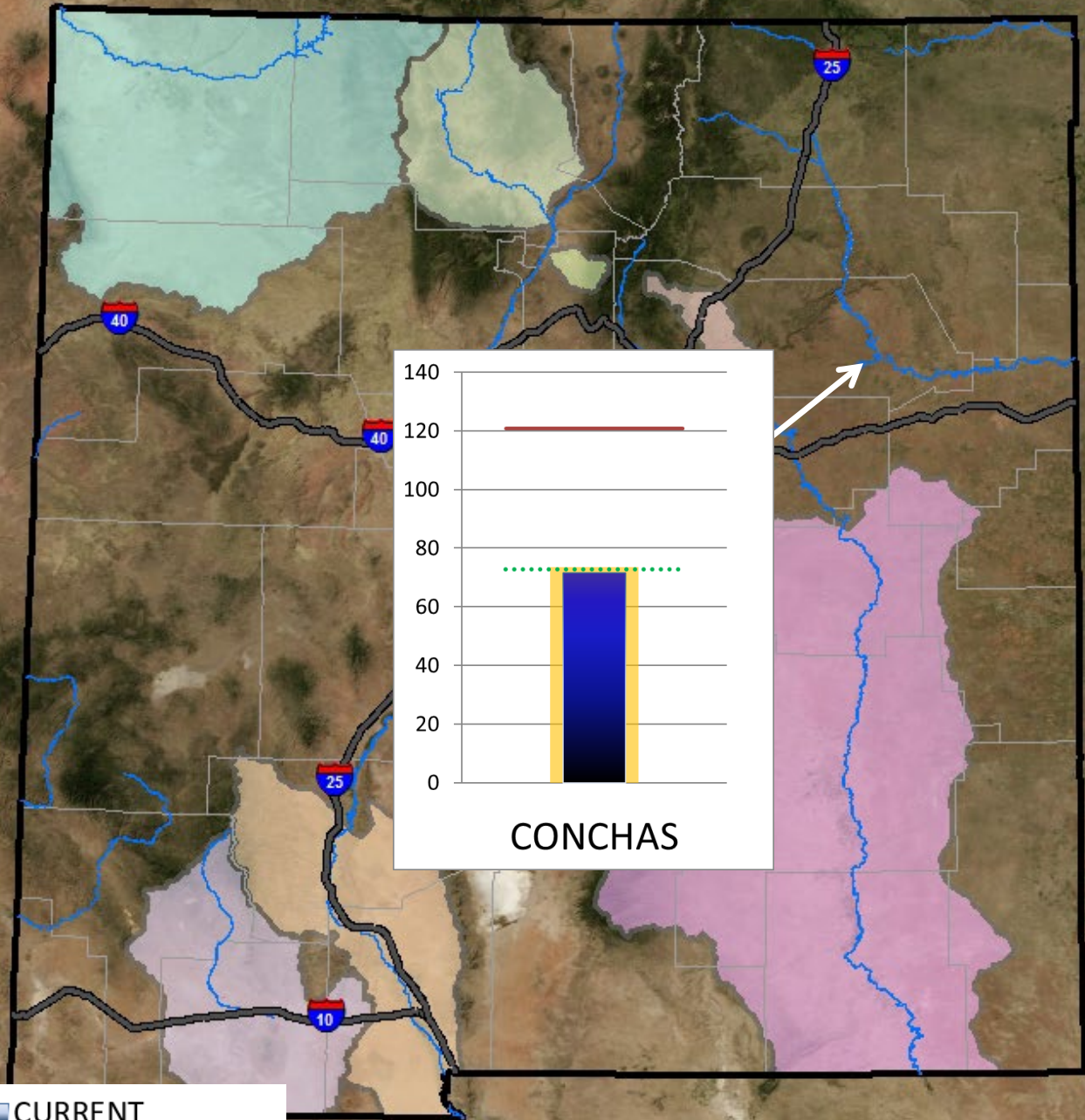
■ LAST YEAR

■ CURRENT

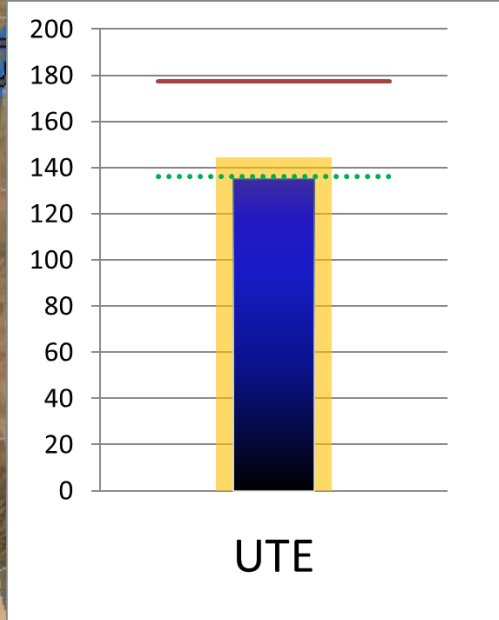
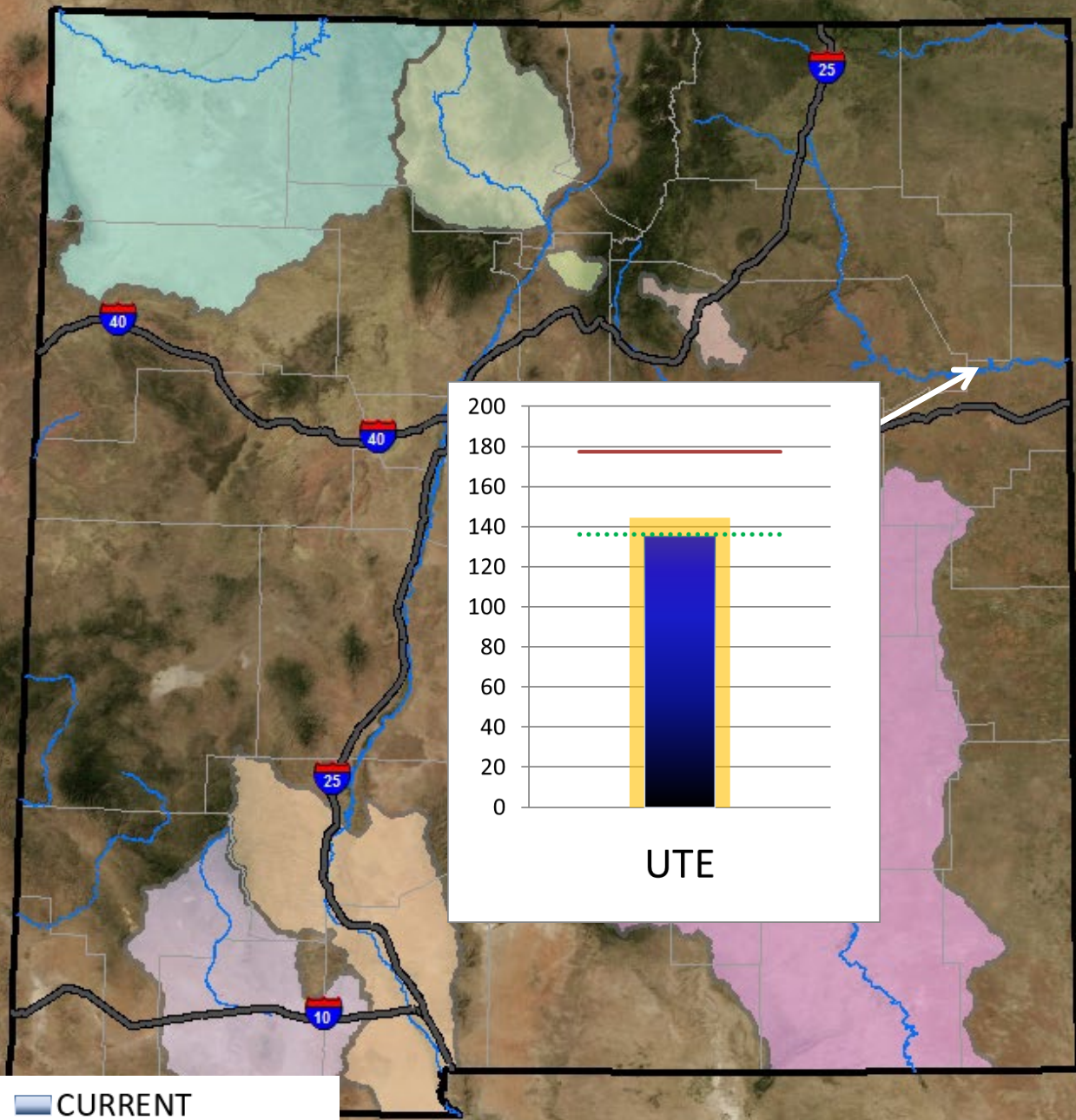
— MEDIAN

..... PREVIOUS MONTH

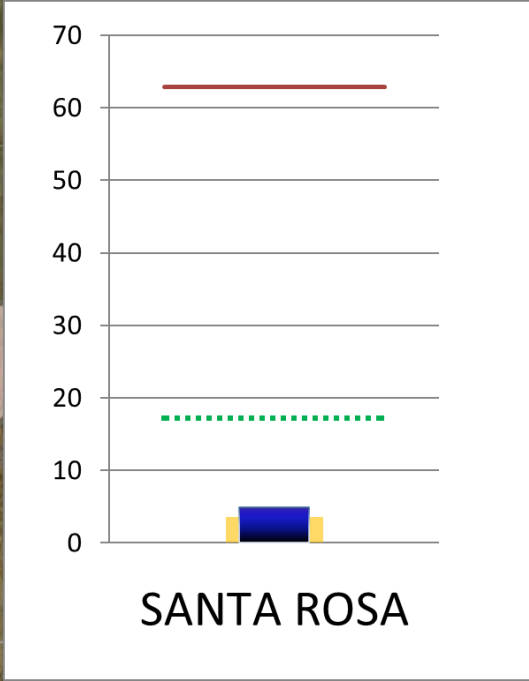
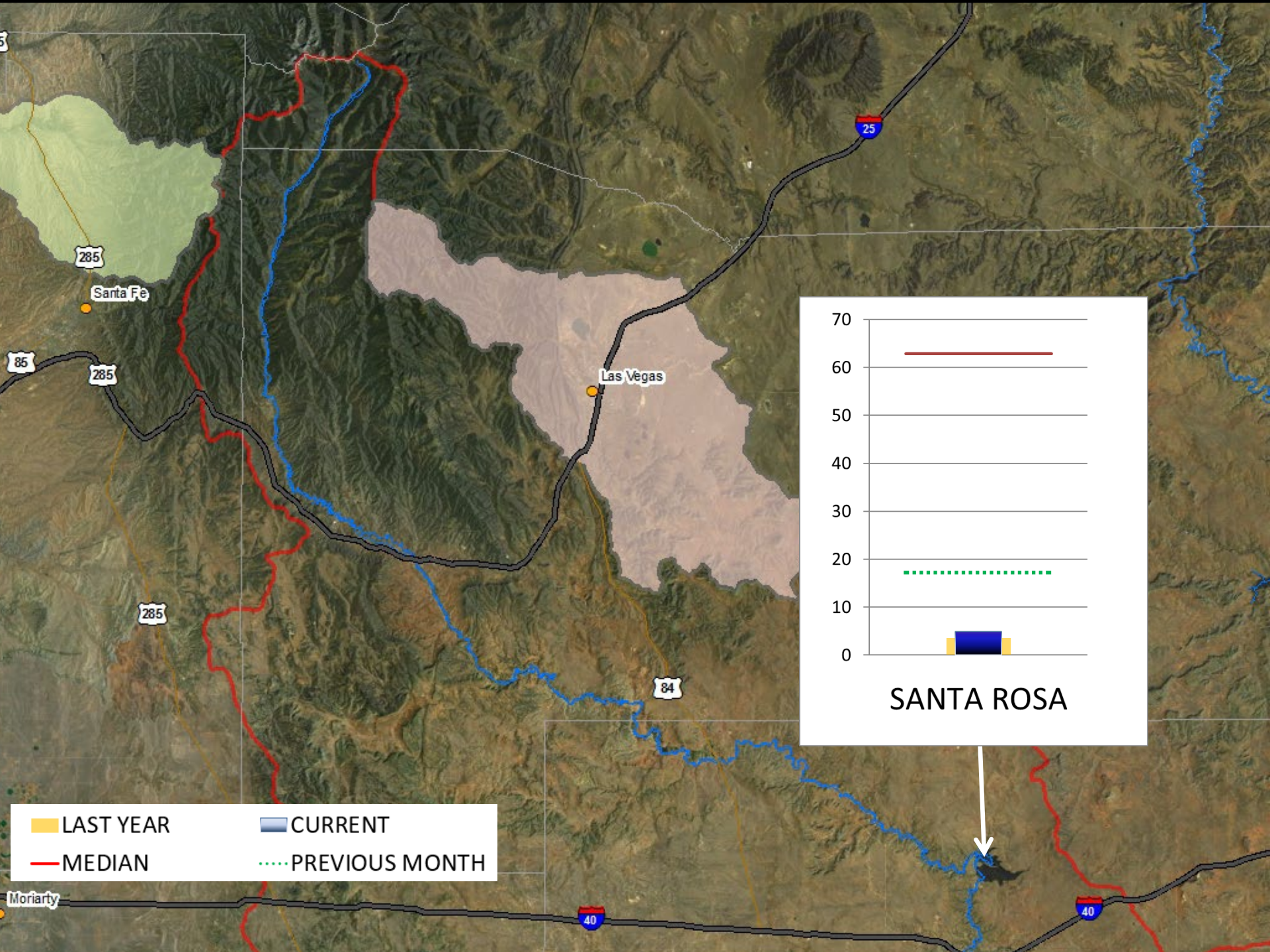




■ LAST YEAR ■ CURRENT
— MEDIAN ···· PREVIOUS MONTH

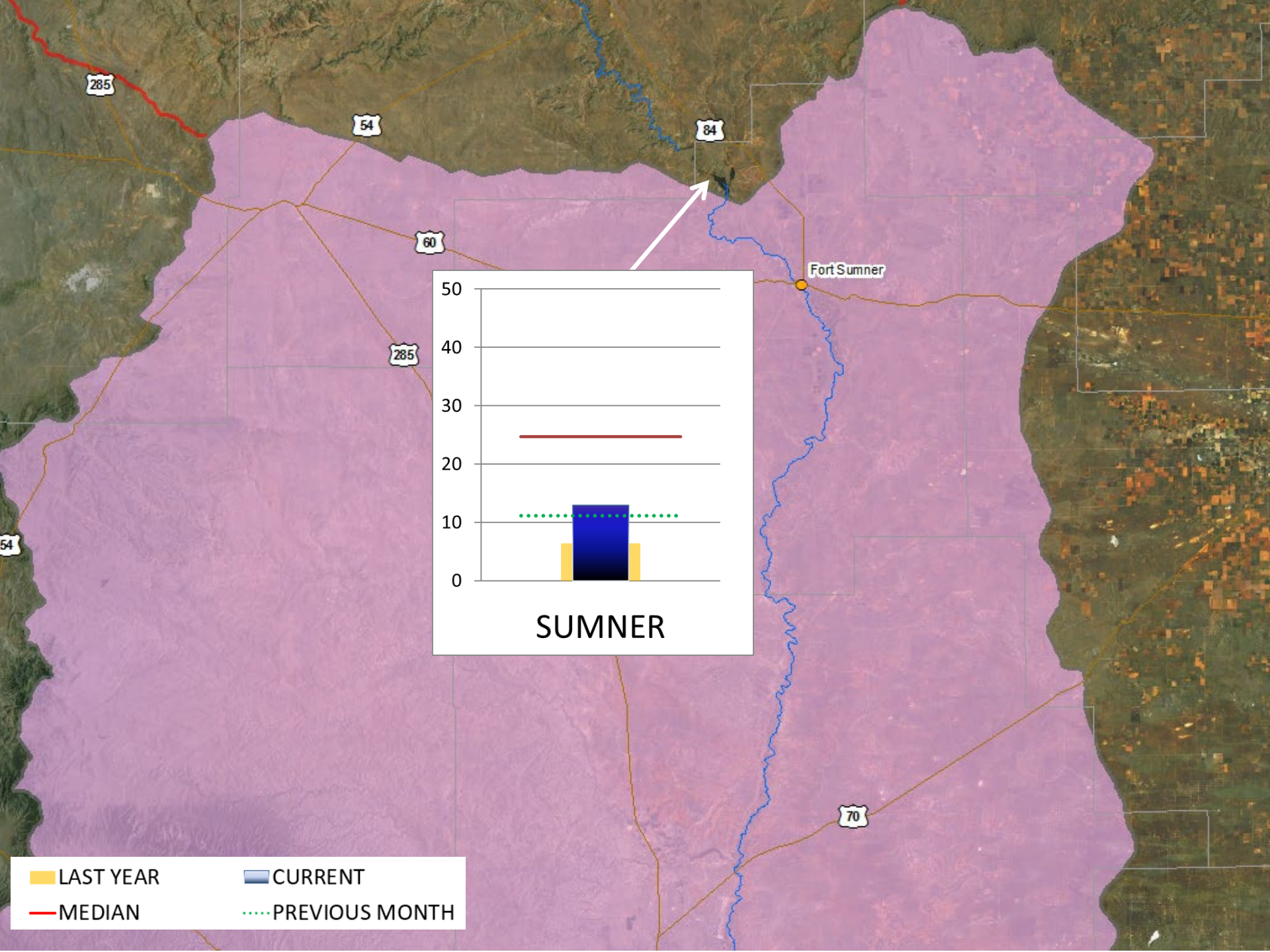


LAST YEAR CURRENT
MEDIAN PREVIOUS MONTH



■ LAST YEAR ■ CURRENT
— MEDIAN ···· PREVIOUS MONTH

Moriarty

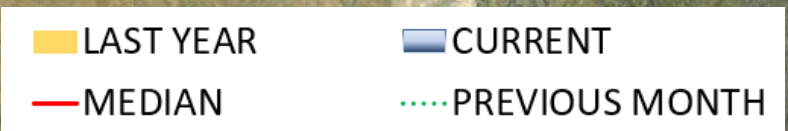
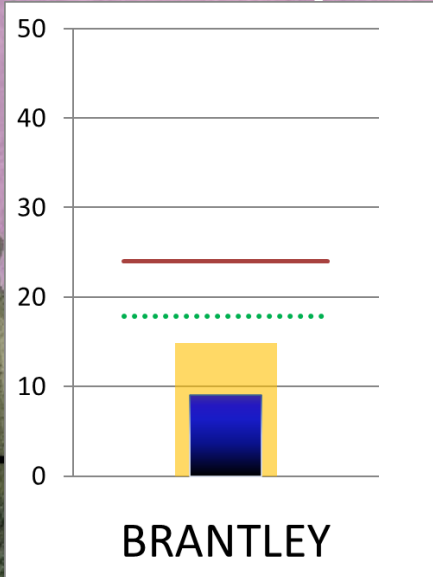
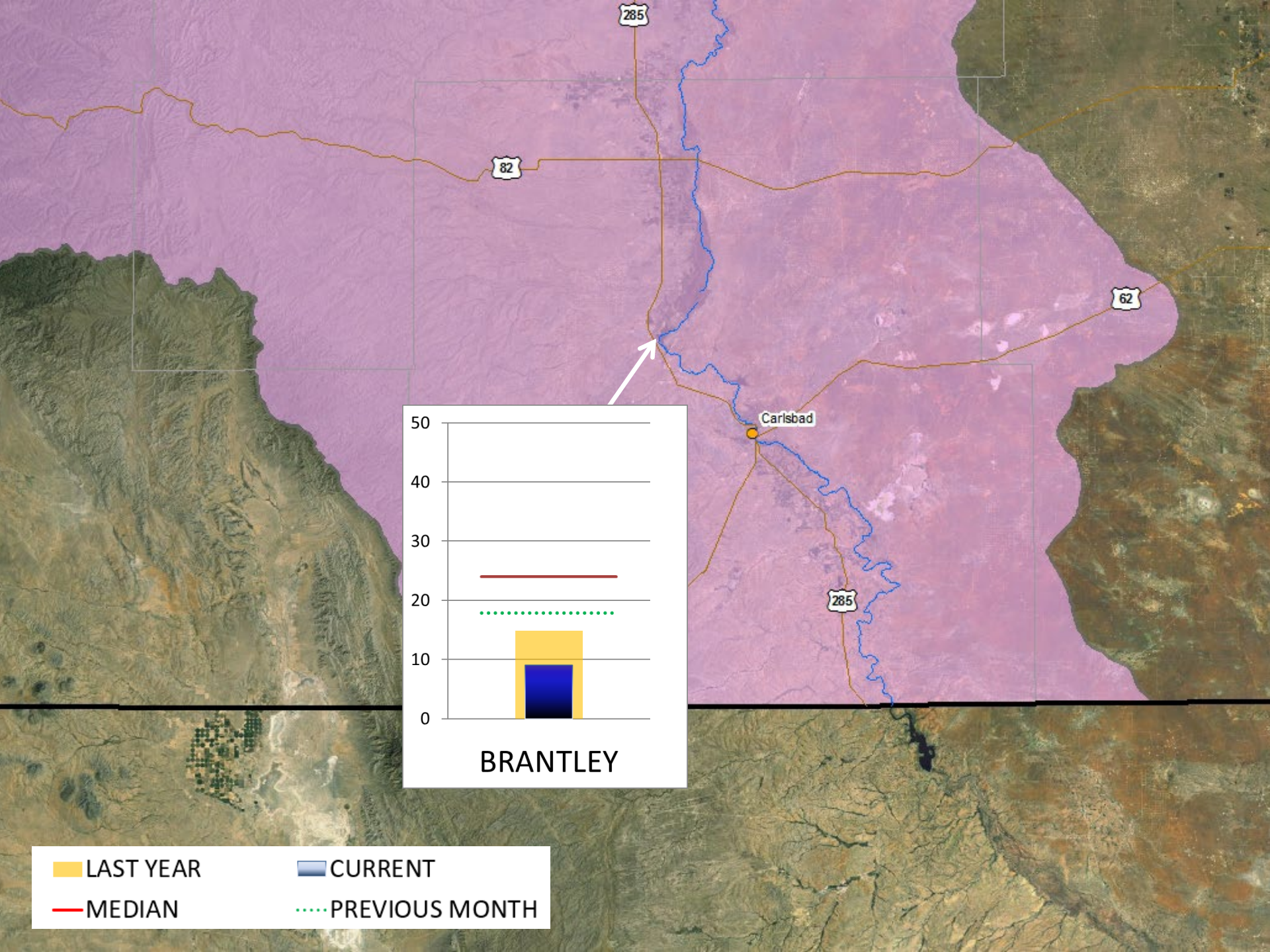


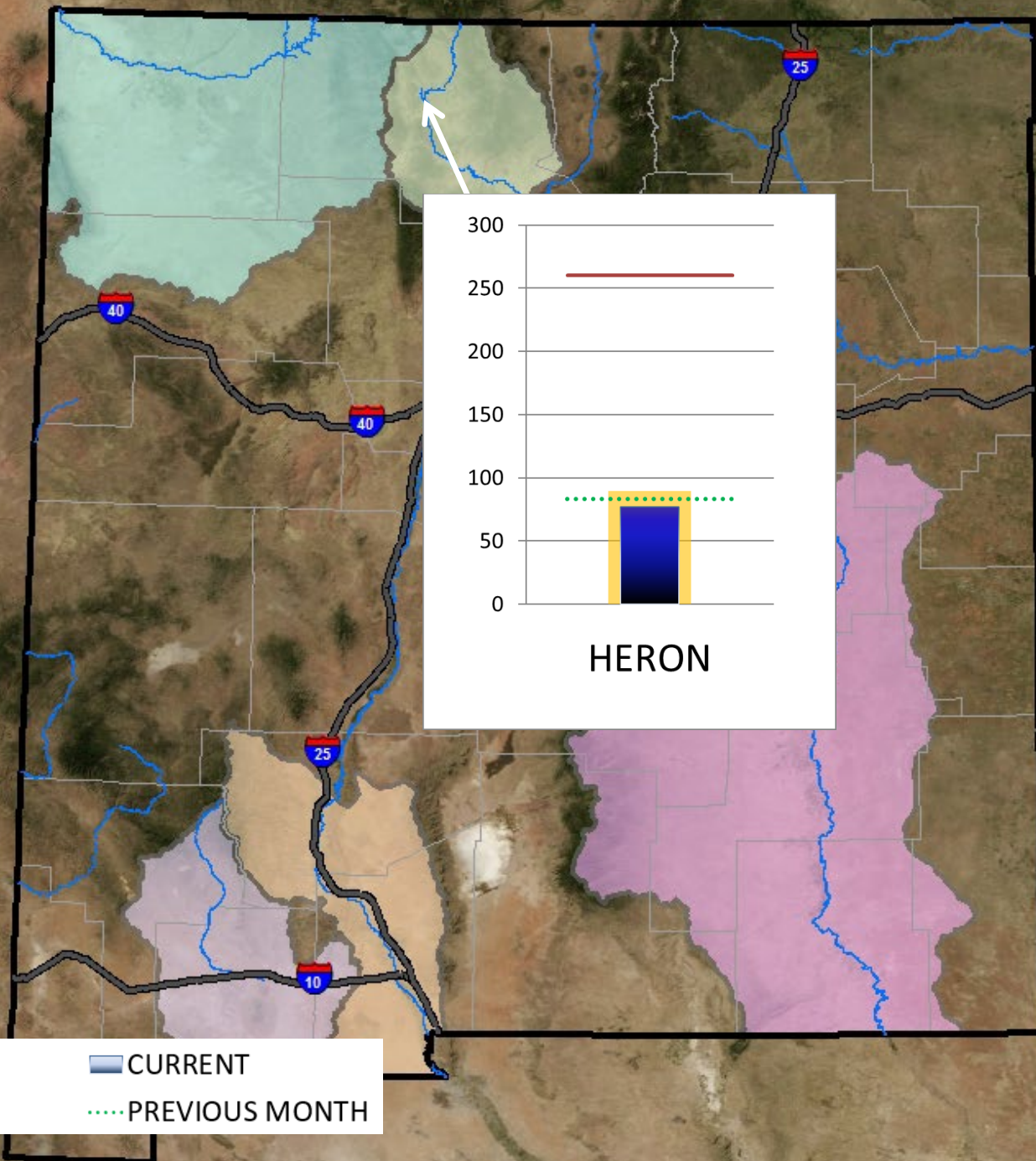
LAST YEAR

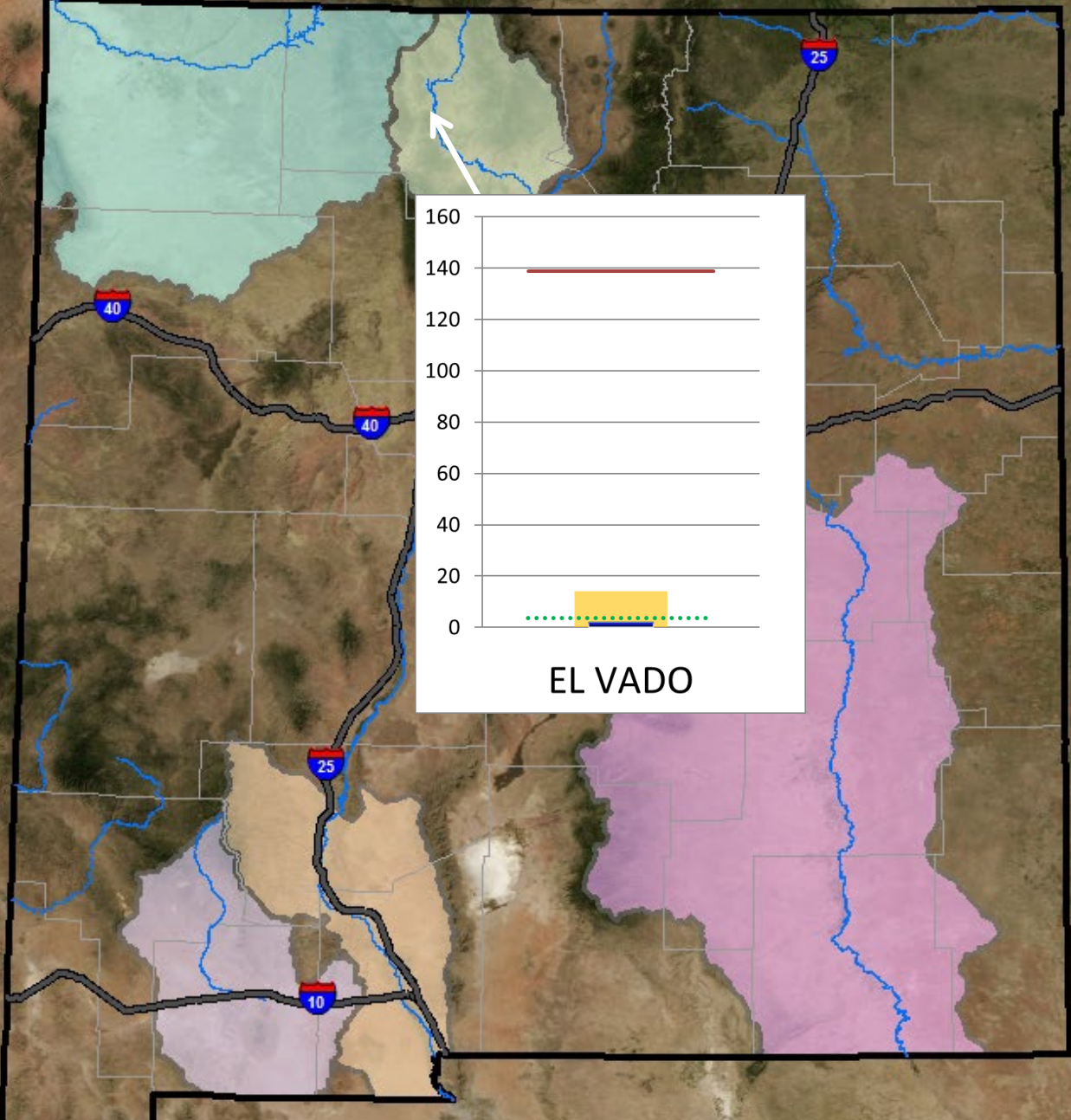
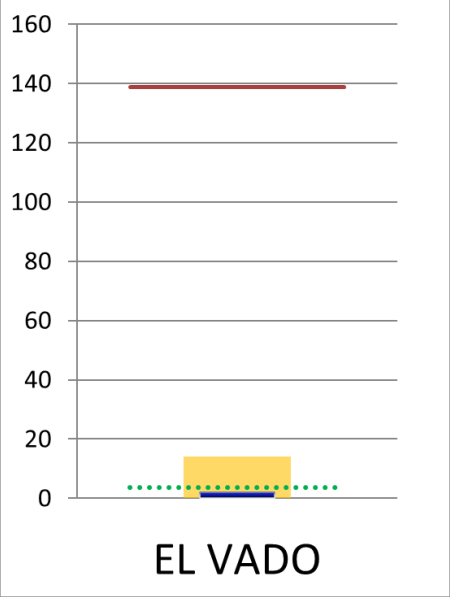
CURRENT

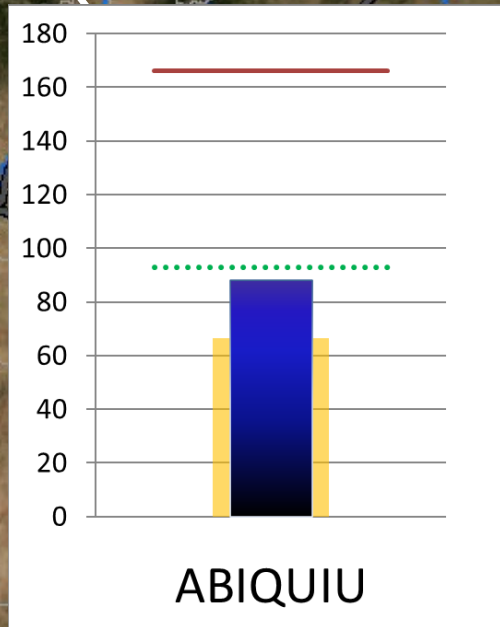
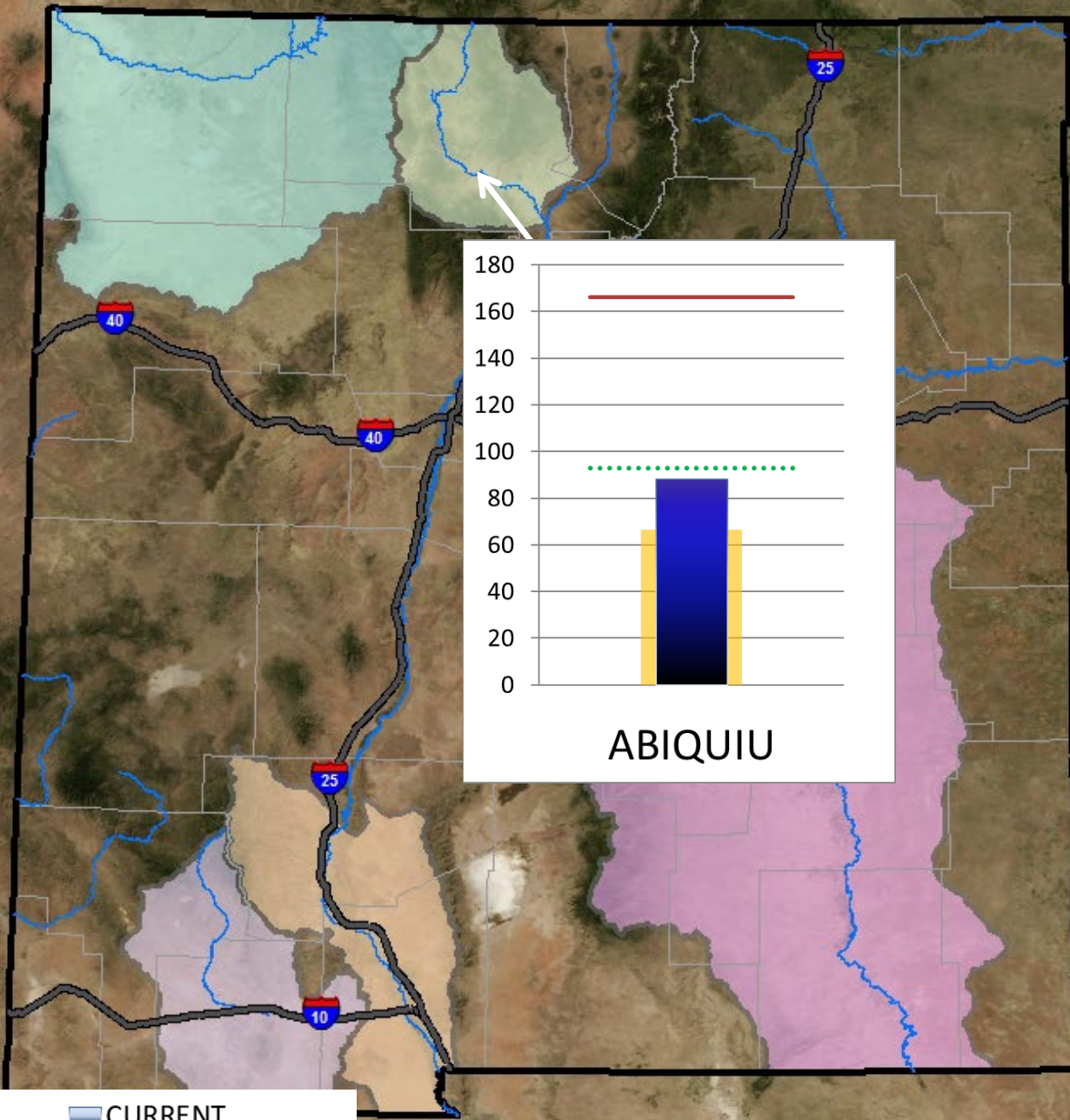
MEDIAN

PREVIOUS MONTH

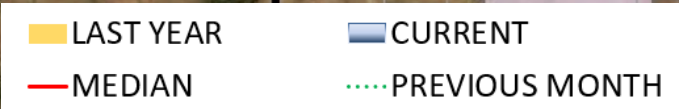


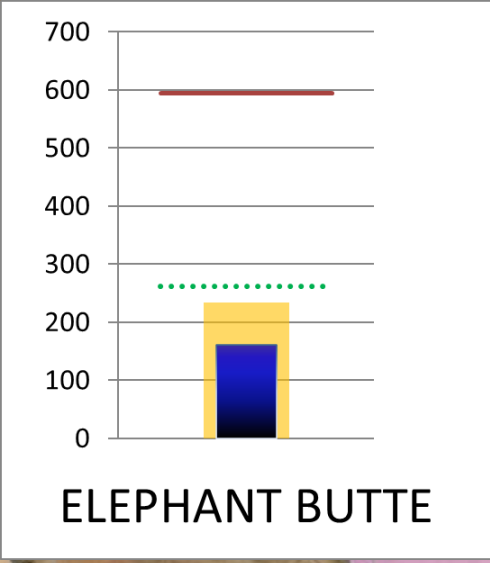
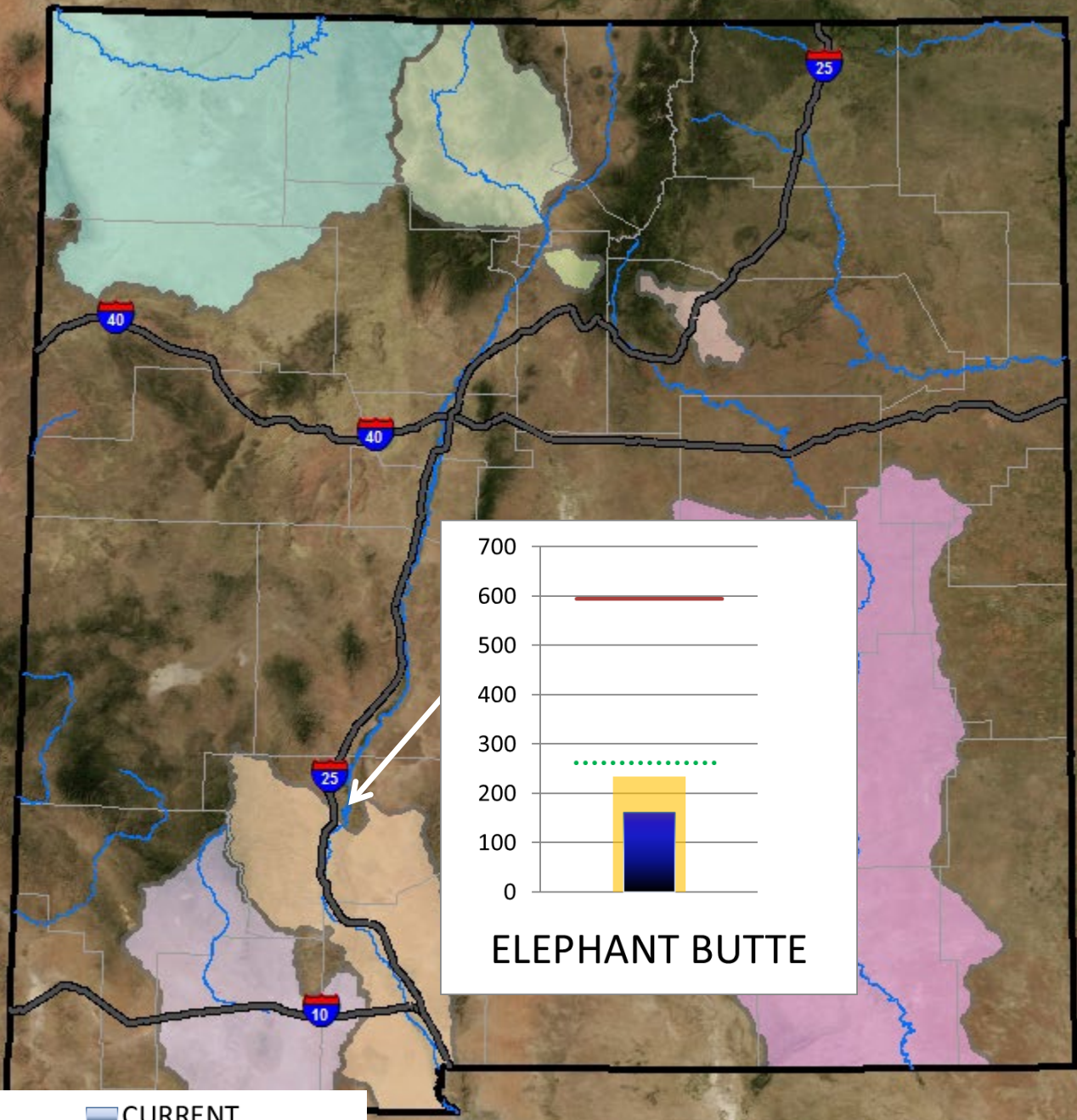






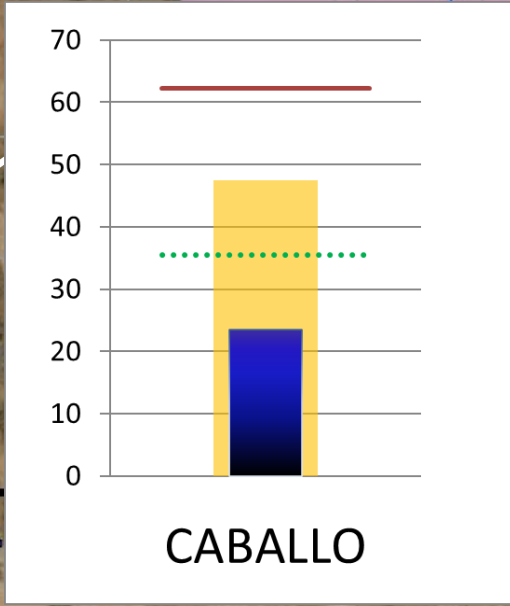
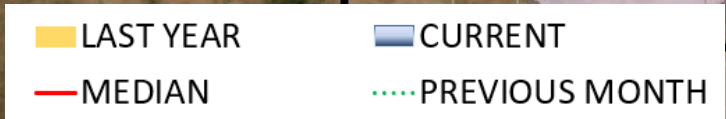
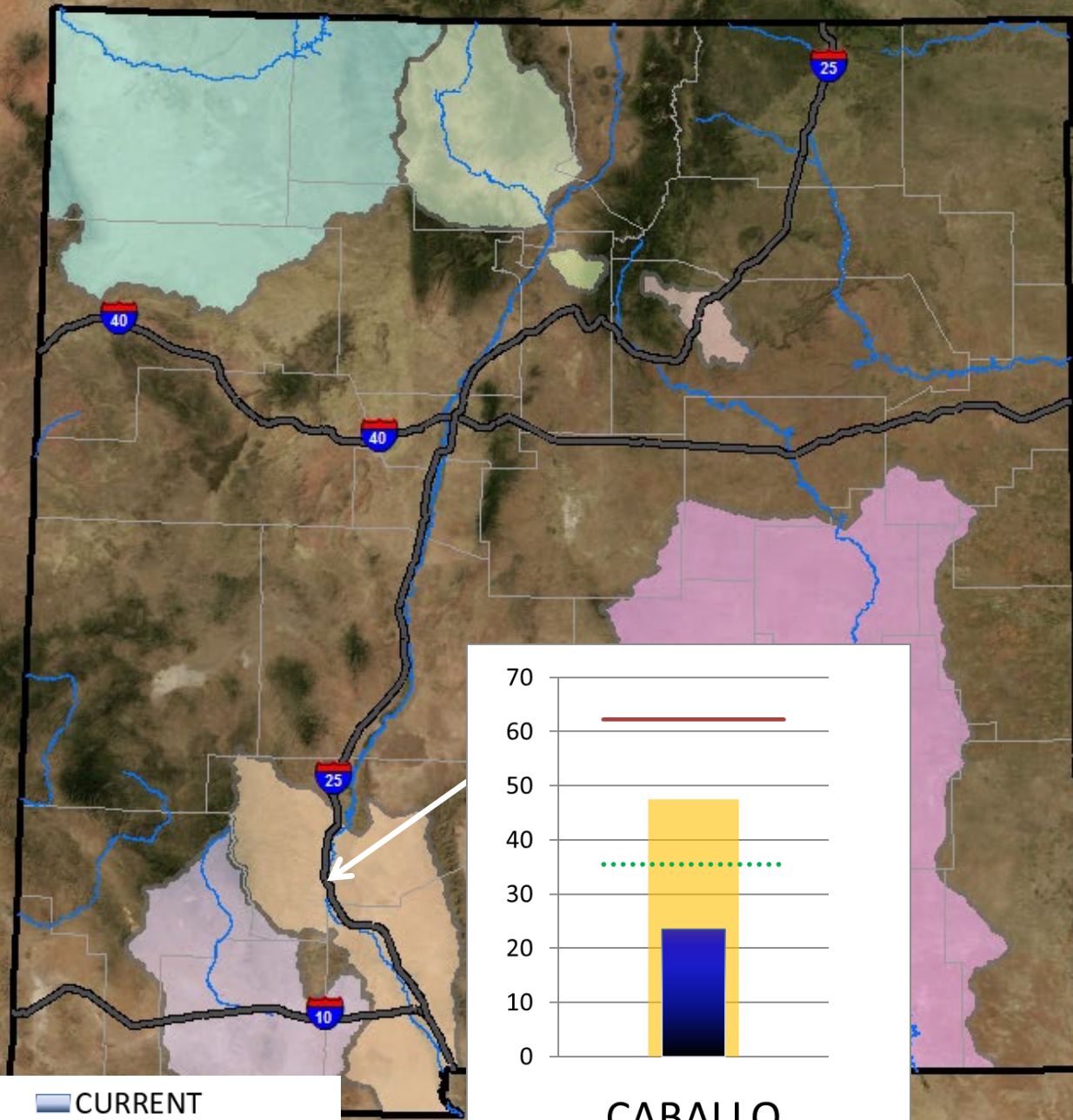
ABIQUIU





ELEPHANT BUTTE

- LAST YEAR
- CURRENT
- MEDIAN
- PREVIOUS MONTH



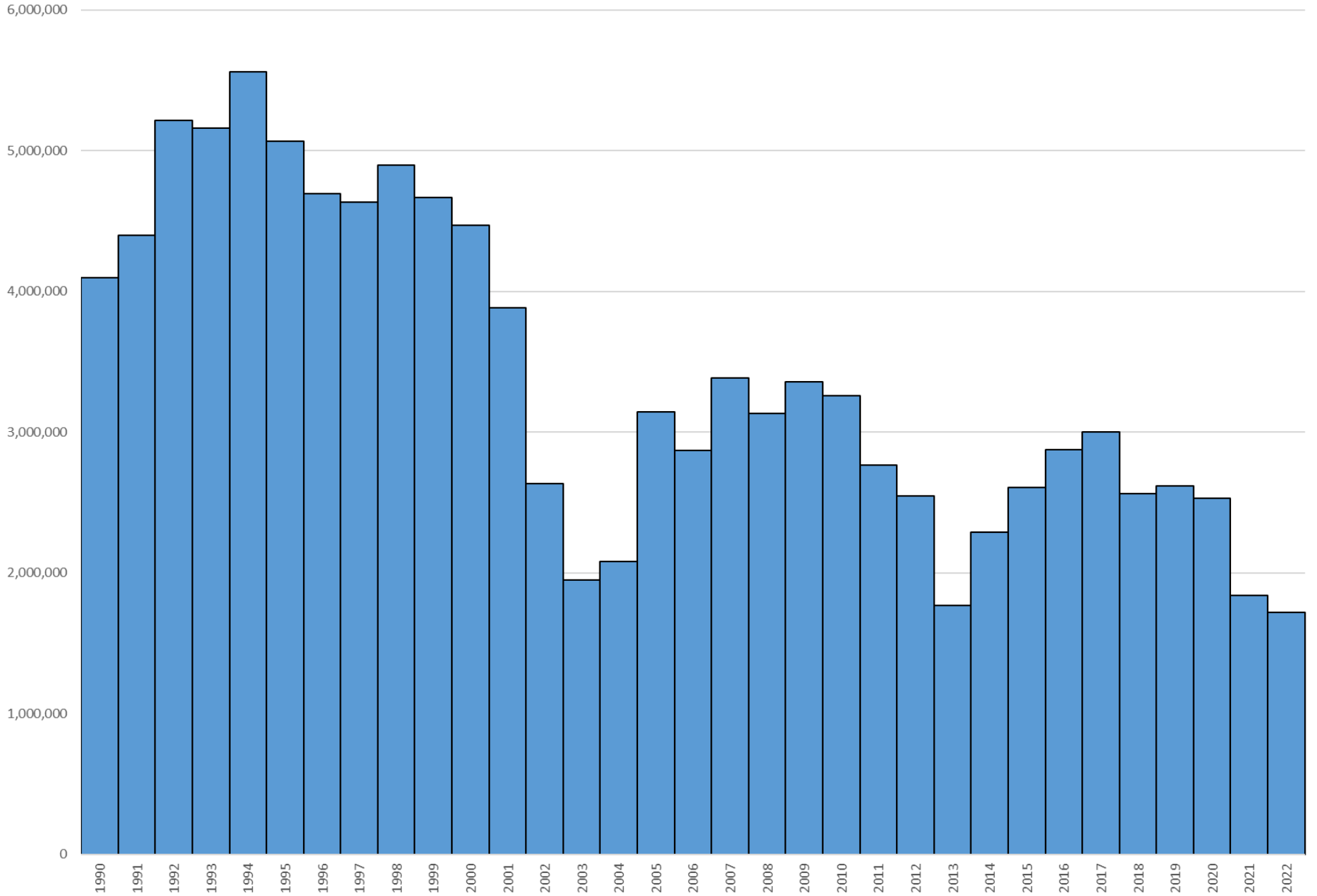
Reservoir Storage Volumes in New Mexico - June 2022

RESERVOIR	CURRENT	LAST YEAR	MEDIAN	PREVIOUS MONTH
NAVAJO	984	1105	1485	1002
CONCHAS	71	73	121	73
UTE	135	145	178	136
SANTA ROSA	5	4	63	17
SUMNER	13	6	25	11
BRANTLEY	9	15	24	18
HERON	77	89	260	83
EL VADO	2	14	139	4
ABIQUIU	88	67	166	93
ELEPHANT BUTTE	161	234	594	262
CABALLO	23	47	62	36

Units are in Thousands of Acre-Feet


Total Large Reservoir Storage in New Mexico (12 reservoirs)

May End-of-Month Storage (acre-feet)



DROUGHT PLANNING | **DROUGHT TASK FORCE** | **DROUGHT FORECAST** | **DROUGHT STATUS** | **WATER PLANS**

New Mexico Governor's Drought Task Force








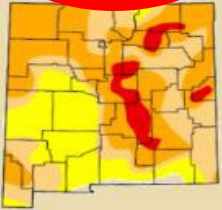
Google Custom Search Search

- | Home
- | Water
- | Fire
- | Economy
- | Education
- | Health
- | Recreation & Lifestyle
- | Agriculture
- | Partners
- | **Drought Status**
[Monthly Status Reports](#)
- | Drought Threat Assessment

New Mexico Drought Task Force

The Drought Task Force is chaired by the State Engineer and includes experts in water, the environment, wildfires, New Mexico recreation, agriculture and health. The current drought has impacted all New Mexicans. This web page provides information across many sectors of our state.

-  **Water**
-  **Economy**
-  **Fire**
-  **Recreation**
-  **Health**
-  **Agriculture**
-  **Environment**
-  **Education**



[Click Map for larger viewing and Current Status](#)

